

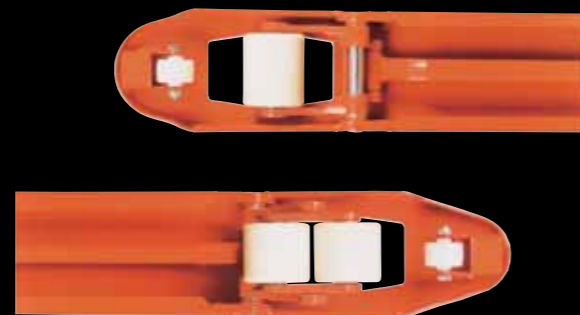
## Standard and optional equipment

### Low maintenance

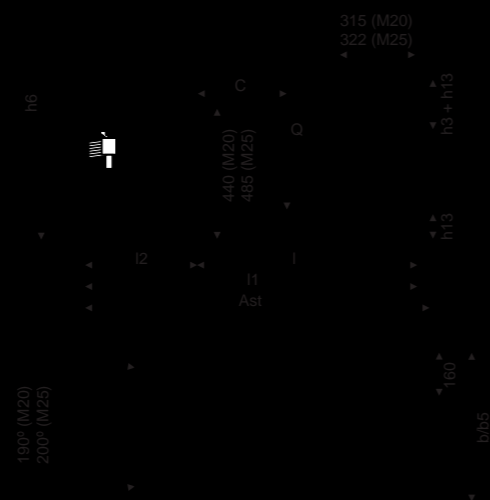
- Torsion-resistant chassis design
- Solid push rods
- Sealed hydraulic unit
- 12 month's warranty

### Economical service support

- Fixed price servicing
- Full maintenance contracts
- Breakdown service cover
- Rapid collect and repair package



| Technical data      |          | M 20             | M 25             |
|---------------------|----------|------------------|------------------|
| Load capacity       | Q (kg)   | 2000             | 2500             |
| Load centre         | c (mm)   | 500, 600         | 500, 600         |
| Lift                | h3 (mm)  | 115              | 115              |
| Lowered height      | h13 (mm) | 85               | 85               |
| Overall height      | h6 (mm)  | 1225             | 1235             |
| Fork length         | l (mm)   | 1000, 1150, 1220 | 1000, 1150, 1220 |
| Overall length      | l1 (mm)  | 1330, 1480, 1550 | 1375, 1525, 1595 |
| Length to fork face | l2 (mm)  | 330              | 375              |
| Overall width       | b (mm)   | 550, 685         | 550, 685         |
| Fork spread         | b5 (mm)  | 550, 685         | 550, 685         |
| Working aisle width | Ast (mm) | 1530, 1680, 1750 | 1575, 1725, 1795 |
| Steer wheel         | mm       | ø 175 x 50       | ø 200 x 50       |
| Load wheels, single | mm       | ø 80 x 93        | ø 80 x 93        |
| Load wheels, tandem | mm       | ø 80 x 70        | ø 80 x 70        |
| Truck weight        | kg       | 64 to 85         | 68 to 90         |



The manufacturer reserves the right to alter specifications without notice. Illustrations and technical details may change for actual construction. All measurements subject to customary tolerances.

## Hand Pallet Trucks Capacity 2000 kg & 2500 kg M 20, M 25

SERIES 4 (M 20)  
SERIES 2 (M 25)

Linde Material Handling

